



SYMKLOUD-MS

OneClick Bundle 3.13.00

Release Notes

PCN no.: 1911

Revision	Brief Description of Changes	Date of Issue
0.1	Initial release ¹	20-December-2019

¹ Based on template rev.1.0 – 2018.03.28

1/ Description of the change(s)

The new OneClick bundle Lightspeed Elfin (version 3.13.00) is now available for the SYMKLOUD-MS platform, which includes all new firmwares for the listed Symkloud series systems.

1.1. OneClick bundle 3.13.00

The versions of each firmware component included in the bundle are listed in the table below, with those that have been updated (vs. the versions included in the previous bundle) highlighted in **bold**. The changes introduced in each individual firmware component are listed in section "4/ Individual Changelog" of this document.

	Product	Component	Previous version	New version
	OneClick Bundle MS29XX		3.12.00 (Kiwi Elfin)	3.13.00 (Lightspeed Elfin)
Hub Nodes	MSH8900	ShMC	3.19.09377D23	3.20.093AA546
		FPGA	2.06	same
	MSH8910	ShMC	2.21.09377D30	2.22.093AA54E
		FPGA	1.12	same
	MSH8920	ShMC	1.20.013774fa	same
		FPGA	1.05.0800D656	same
Compute Nodes	MSP800x	BIOS	1.00	same
		IPMC	3.33.0916B3EC	same
		FPGA	1.10	same
	MSP802x	BIOS	2.20.0926E48B	2.21.093A2A53
		IPMC	2.20.091805DF	same
		FPGA	2.14	same
	MSP803x	BIOS	2.16	same
		IPMC	1.01.090A145F	same
		FPGA	1.00	same
	MSP804x	BIOS	1.55.09369575	1.56.093A2B83
		IPMC	1.17.09377D72	same
		FPGA	2.02	same
	MSP805x	BIOS	1.06.0937749C	1.07.093A4DC4
		IPMC	1.08.09377D69	1.09.093AA546
		FPGA	1.02	same
	MSP806x	BIOS	1.11.09367549	1.12.093A13ED
		IPMC	1.10.01377b97	1.11.013a8d27
			FPGA	1.01.0800f920

2/ Change Classification

Classification	○ Maintenance release, Product improvement
Application	○ The Firmware is field upgradeable

3/ Impact on customer application and recommended actions

In order to benefit from the latest features, enhancements and fixes, Kontron recommends that customers upgrade all SYMKLOUD-MS systems and components to the latest firmware versions as soon as is practical.

4/ Individual Changelogs

Product	Component & Version	Changelog
MSH8900	ShMC 3.20.093AA546	<p>Changes since 3.19.09377D23</p> <p>Bug Fixes:</p> <ul style="list-style-type: none"> • Fix for handling of "Unsupported interface" Completion Code for HPM.1 commands • Fixed the "Wait for Timeout" issue when a rollback occurs <p>Internal Improvements:</p> <ul style="list-style-type: none"> • Updated Kontron ipmitool version to 1.8.13-K15 • Added support for eUSB pre-formatted in GPT • Timeout changed from 60 to 5 when there is no upgrade in progress • Added Kontron OEM command: ntp • Ipmitool lanplus interface default buffer size for MEGARAC bmc boards now 1024 bytes • Option to skip question prompt for HPM upgrade added • Enabled SOL authentication and encryption only when part of a lanplus session with ipmitool

Product	Component & Version	Changelog
MSH8910	ShMC 2.22.093AA54E	<p>Changes since 2.21.09377D30</p> <p>Bug Fixes:</p> <ul style="list-style-type: none"> • Fix for handling of "Unsupported interface" Completion Code for HPM.1 commands • Fixed the "Wait for Timeout" issue when a rollback occurs <p>Internal Improvements:</p> <ul style="list-style-type: none"> • Updated Kontron ipmitool version to 1.8.13-K15 • Added support for eUSB pre-formatted in GPT • Timeout changed from 60 to 5 when there is no upgrade in progress • Added Kontron OEM command: ntp • Ipmitool lanplus interface default buffer size for MEGARAC bmc boards now 1024 bytes • Option to skip question prompt for HPM upgrade added • Enabled SOL authentication and encryption only when part of a lanplus session with ipmitool

Product	Component & <i>Version</i>	Changelog
MSP8020	BIOS 2.21.093A2A53	Changes since version 2.19 09228CAA <ul style="list-style-type: none">Merged BIOS to latest version with various security updates: Intel SA-00233, , Intel #608917, TianoCore SA, CVE-2018-12126, CVE-2018-12127, CVE-2018-12130

Product	Component & <i>Version</i>	Changelog
MSP8040	BIOS 1.56.093A2B83	Changes since BIOS version 1.55.09369575 : <ul style="list-style-type: none">BIOS updated to latest uCode for Grangeville family products including various security updates

Product	Component & Version	Changelog
MSP8050	IPMC 1.09.093AA546	<p>Changes since 1.08.09377D69:</p> <p>Bug Fixes:</p> <ul style="list-style-type: none"> Fixed an issue where Linux command "shutdown -h now" would reboot a payload instead of expected warm OS power down. Fixed "Wait for timeout" issue when a rollback occurs <p>Internal Improvement</p> <ul style="list-style-type: none"> Reduced timeout from 60 to 5 when no upgrade is in progress Added Kontron OEM command: ntp Ipmitool lanplus interface default buffer size for MEGARAC bmc boards now 1024 bytes Option to skip question prompt for HPM upgrade added Enabled SOL authentication and encryption only when part of a lanplus session with ipmitool
	BIOS 1.07.093A4DC4	<p>Changes since 1.06.0937749C:</p> <ul style="list-style-type: none"> Upgraded microcode to latest version Update to latest Intel ME Firmware revision 11.8.71.3630

Product	Component & Version	Changelog
MSP8060	IPMC 1.11.013a8d27	<p>Changes since 1.10.01377b97:</p> <p>Internal Improvements</p> <ul style="list-style-type: none"> OEM command added to clear the COW (copy-on-write layer) Enabled support for new ipmitool bootdev command option: efiboot
	BIOS 1.12.093A13ED	<p>Changes since 1.11.09367549:</p> <ul style="list-style-type: none"> Merged BIOS to latest version with various security updates Updated ME, microcode and LAN version to the latest.

5/ Associated Network OS

5.1. : Release History

Firmware Package Version	Release Date	Chassis Support	MSH8900	MSH8910	MSH8920
3.13.00	Dec-2019	MS29xx, MS1300	2.23	HOTFIX4.51	1.7.2-12
3.12.00	Sept-2019	MS29xx, MS1300	2.23	HOTFIX4.51	1.7.2-12
3.11.00	Feb-2019	MS29xx, MS1300	2.22	GA4.50	1.7.2-12
3.10.00	Feb-2019	MS29xx, MS1300	2.22	GA4.50	1.7.2-12
3.09.01	Jan-2019	MS29xx	1.14	GA4.50	1.6.4-24
3.08.00	Oct-2018	MS29xx	1.14	GA4.50	1.6.4-24
3.07.00	Apr-2018	MS29xx	1.14	GA4.50	1.6.4-24
3.06.02	Feb-2018	MS29xx	1.14	GA4.50	1.6.4-24
3.05.01	Dec-2017	MS29xx	1.12	HOTFIX4.00	1.5.4-32
3.04.05	Apr-2017	MS29xx	1.12	HOTFIX4.00	N/A
3.00	May-2016	MS29xx	1.12	HOTFIX3.02	N/A
2.16	Sept-2015	MS29xx	1.12	GA2.01	N/A

6/ How to identify your product

MSH-Hub Nodes and MSP-Nodes

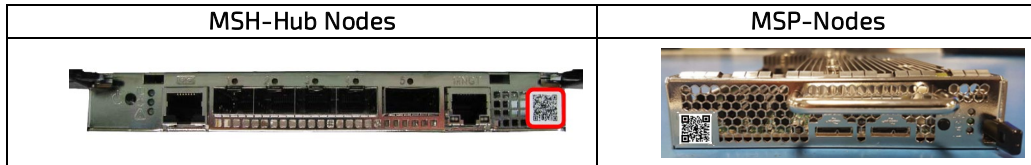
Electronically:

- From the System Monitor WebUI/API (including SystemInformation.txt)
- From any specific component's ipmitool interface (IoL, Serial, etc.) with the command 'hpm check'

Physical labels:

- Each MSH-Hub Nodes and MSP-Nodes includes a 2D barcode on its faceplate, encoding the following details:

Board serial number 90xxxxxxxx
 Board part number xxxx-xxxx
 Batch ID xxyyzzzzzz
 Base MAC address 00:A0:A5:xx:xx:xx



MS29xx Chassis

Electronically:

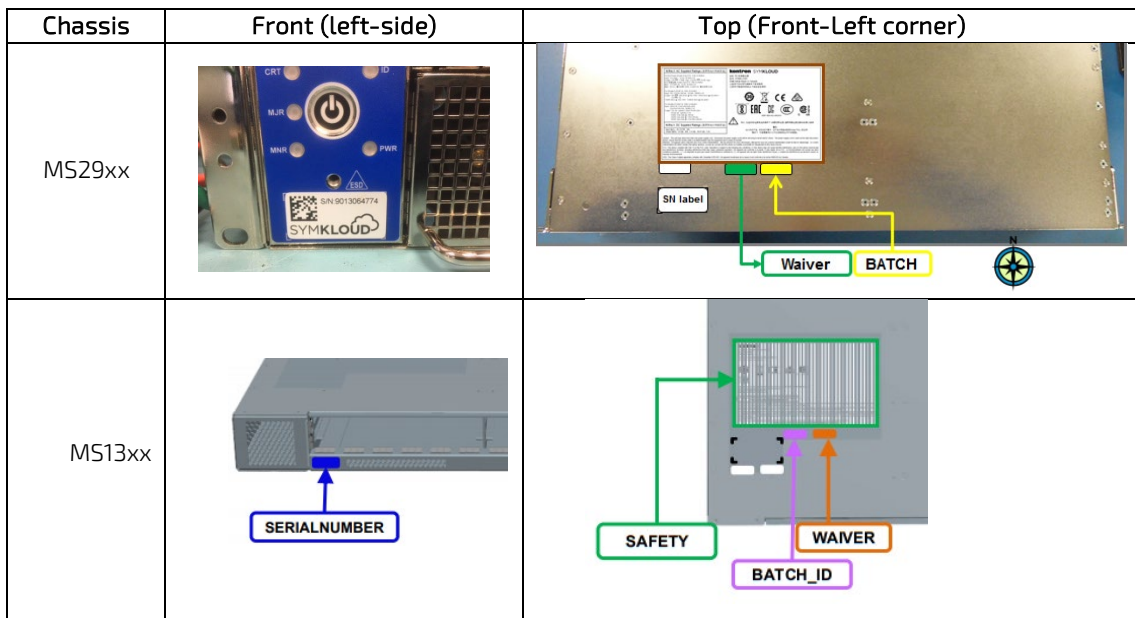
- From the Active ShMC's ipmitool interface (IoL, serial, etc.) with the command 'fru print'; the Chassis SN/PN is listed under FRU Device Description : "PDB 1 (ID 128)" and "PDB 2 (ID 130)"

Physical labels:

- Located on the top-cover of the system, the serial number and Batch ID labels encode:

Board serial number 90xxxxxxxx
 Board part number xxxx-xxxx
 Batch ID xxyyzzzzzz

The System serial number is also encoded on the front-faceplate 'Symkloud' Label (shown below).



About Kontron in Communications

Kontron designs hardware for the software-defined world. Service providers and enterprise clients around the globe collaborate with Kontron and its ISV and channel partners to deploy new services with greater speed, confidence and operational efficiency. Our portfolio is a best-of-breed of OEM hardware and SYMKLOUD Open Infrastructure Platforms dedicated to the deployment of virtual services using software defined networks (SDN) and network functions virtualization (NFV). For more information, please visit www.symkcloud.com or www.kontron.com/communications.

CORPORATE OFFICES

KONTRON CANADA

4555 Ambroise-Lafortune
Boisbriand, QC
Canada J7H 0A4
Tel.: +1 450 437-5682
Tel.: +1 800 387-4223