



SYMKLOUD-MS

OneClick Bundle 3.12.00

Release Notes

PCN no.: 1908

Revision	Brief Description of Changes	Date of Issue
0.1	Initial release ¹	18-October-2019

¹ Based on template rev.1.0 – 2018.03.28

1/ Description of the change(s)

The Kiwi Elfin firmware release (version 3.12.00) is now available for the SYMKLOUD-MS platform, which includes a new OneClick bundle.

1.1. OneClick bundle 3.12.01

The versions of each firmware component included in the bundle are listed below, with those that have been updated (vs. the versions included in the previous bundle) highlighted in **bold**. The changes introduced in each individual firmware component are listed in section "4/ Individual Changelog" of this document.

	Product	Component	Previous version	New version
	OneClick Bundle MS29XX		3.11.01 (Jumpy Elfin)	3.12.00 (Kiwi Elfin)
Hub Nodes	MSH8900	ShMC	3.18.09340370	3.19.09377D23
		FPGA	2.06	same
	MSH8910	ShMC	2.20.0930e581	2.21.09377D30
		FPGA	1.12	same
	MSH8920	ShMC	1.17.0130f417	1.20.013774fa
		FPGA	1.05.0800D656	same
Compute Nodes	MSP800x	BIOS	1.00	same
		IPMC	3.33.0916B3EC	same
		FPGA	1.10	same
	MSP802x	BIOS	2.20.0926E48B	same
		IPMC	2.20.0122BB90	same
		FPGA	2.14	same
	MSP803x	BIOS	2.16	same
		IPMC	1.01.090A145F	same
		FPGA	1.00	same
	MSP804x	BIOS	1.53.09289D8D	1.55.09369575
		IPMC	1.16.0930FC99	1.17.09377D72
		FPGA	2.02	same
	MSP805x	BIOS	1.05.0926BD66	1.06.0937749C
		IPMC	1.07.0930E5C2	1.08.09377D69
		FPGA	1.02	same
	MSP806x	BIOS	1.09.09289d49	1.11.09367549
		IPMC	1.09.0130f42b	1.10.01377b97
		FPGA	1.01.0800f920	same

2/ Change Classification

Classification	○ Maintenance release, Product improvement
Application	○ The Firmware is field upgradeable

3/ Impact on customer application and recommended actions

In order to benefit from the latest features, enhancements and fixes, Kontron recommends that customers upgrade all SYMKLOUD-MS systems and components to the latest firmware versions as soon as is practical.

4/ Individual Changelogs

NOTE: This table only includes firmware components whose versions have changed since the previous bundle release.

Product	Component & Version	Changelog
MSH8900	ShMC 3.19.09377D23	<p>Changes since 3.18.09340370</p> <p>Bug Fixes:</p> <ul style="list-style-type: none"> • Fixed intermittent issue where management port was down during bootup. • Fix for health status sensor providing incorrect health status assertion. • Fixed a bug where ipmi command <i>sdr list mcloc</i> would report both ShMC as being active. • Fixed an issue where it was impossible to set an IPMI password of exactly 16 characters • Fixed an issue where the system event log would be flooded with hot swap events if a node was kept in M1 state • Fixed an issue where a node's health status icon would not be coherent with their payload health status • Fixed an issue where you would lose an uploaded OneClick bundle when changing page in the WebUI • Fixed an issue where nodes with unreachable BMCs were silently ignored by OneClick upgrades • Fixed an issue where bytes were swapped for discrete sensors values in the SystemInformation.txt information output. • WebUI now uses the buildID as a Web Interface version in the "About" DialogBox. • Fixed an issue where the wrong sensor description was used in SEL when targeting processing nodes <p>Internal improvements:</p> <ul style="list-style-type: none"> • Added node information to the serial console prompt. • Added output of "sel elist" to debug bundle feature.
	Switch 2.23	<p>Changes since 2.22:</p> <p>Bug Fixes:</p> <ul style="list-style-type: none"> • Fixed an issue where some units would not boot during RedBoot memory test

Product	Component & Version	Changelog
MSH8910	ShMC 2.21.09377D30	<p>Changes since 2.20.0930e581</p> <p>Bug Fixes:</p> <ul style="list-style-type: none"> • Fixed intermittent issue where management port was down during bootup. • Fix for health status sensor providing incorrect health status assertion. • Fixed an issue preventing DIMM temperature readings • Fixed a bug where ipmi command sdr list mcloc would report both ShMC as being active. • Fixed an issue where it was impossible to set an IPMI password of exactly 16 characters • Fixed an issue where the system event log would be flooded with hot swap events if a node was kept in M1 state • Fixed an issue where a node's health status icon would not be coherent with their payload health status • Fixed an issue where you would lose an uploaded OneClick bundle when changing page in the WebUI • Fixed an issue where nodes with unreachable BMCs were silently ignored by OneClick upgrades • Fixed an issue where bytes were swapped for discrete sensors values in the SystemInformation.txt information output. • WebUi now uses the buildID as a Web Interface version in the "About" DialogBox. • Fixed an issue where the wrong sensor description was used in SEL when targeting processing nodes <p>Internal improvements:</p> <ul style="list-style-type: none"> • Added node information to the serial console prompt. • Enabled the debuglog bundle feature for Symkloud products.
	Switch HOTFIX- 4.51- 20190527114838	<p>Changes since GA-4.50-20170713103328:</p> <p>Bug Fixes:</p> <ul style="list-style-type: none"> • Fixed an issue where the switch could not be updated via the web interface • Fixed an issue where a packet flooding would occur due to duplicate MAC address in the MAC tables of mutiple stacked switches • Fixed an issue where the running-config would not be saved to the startup-config.

Product	Component & Version	Changelog
MSH8920	ShMC 1.20.013774fa	<p>Changes since 1.17.0130f417 FW:</p> <ul style="list-style-type: none"> • Bug Fixes: • Fixed the range of PSUs current reading • Fixed an issue where it was impossible to set an IPMI password of exactly 16 characters • Fix for health status sensor providing incorrect health status assertion. • Fixed a bug where command sdr list mcloc would report both ShMC as active. • Fixed an issue where you would lose an uploaded OneClick bundle when changing page in the WebUI • Fixed an issue where a node's health status icon would not be coherent with their payload health status • Fixed an issue where nodes with unreachable BMCs were silently ignored by OneClick upgrades • Fixed an issue where bytes were swapped for discrete sensors values in the SystemInformation.txt information output. • Fixed lanplus compiling issues with Ubuntu 18.04 • Fixed an issue where the wrong sensor description was used in SEL when targeting processing nodes • WebUI now uses the buildID as a Web Interface version in the "About" DialogBox. <p>Internal Improvements:</p> <ul style="list-style-type: none"> • Added node information to the serial console prompt. • Enabled the <i>debuglog</i> bundle feature for Symkloud products.

Product	Component & Version	Changelog
MSP8040	IPMC 1.17.09377D72	<p>Changes since 1.16.0930FC99</p> <p>Bug Fixes:</p> <ul style="list-style-type: none"> • Fix for health status sensor providing incorrect health status assertion. • Fixed an issue preventing DIMM temperature readings • Fixed an issue where it was impossible to set an IPMI password of exactly 16 characters <p>Internal Improvements:</p> <ul style="list-style-type: none"> • Added node information to the serial console prompt. • Enabled the debuglog bundle feature for Symkloud products.
	BIOS 1.55.09369575	<p>Changes since BIOS version 1.53.09289D8D:</p> <ul style="list-style-type: none"> • New Microcode version • New SPS firmware • Reviewed and updated Security patch for NVME SMM Buffer Integrity • Reviewed and integrated TianoCore Security issues 960, 1133, 1134, 1135, 1136, 1309 updates • Reviewed and updated GoldenDoodle & Zombie Poodle variants (CVE-2018-0732, CVE-2018-0733, CVE-2018-0734, CVE-2018-0735, CVE-2018-0737, CVE-2018-0739, CVE-2018-5407) • Reviewed and integrated Intel SA-00233 (CVE-2018-12126, CVE-2018-12127, CVE-2018-12130, CVE-2019-11091)

Product	Component & Version	Changelog
MSP8050	IPMC 1.08.09377D69	<p>Changes since 1.07.0930E5C2:</p> <p>Bug Fixes:</p> <ul style="list-style-type: none"> • Fixed an issue where payload KCS driver would lock up • Fix for health status sensor providing incorrect health status assertion. • Fixed an issue preventing DIMM temperature readings • Fixed an issue where it was impossible to set an IPMI password of exactly 16 characters • Fixed an issue where the wrong sensor description was used in SEL when targeting processing nodes • Internal improvements: • Added node information to the serial console prompt. • Enabled the <i>debuglog</i> bundle feature for Symkloud products.
	BIOS 1.06.0937749C	<p>Changes since 1.05.0926BD66:</p> <ul style="list-style-type: none"> • Upgraded microcode to latest version • Reviewed and updated Security patch for NVME SMM Buffer Integrity • Reviewed and integrated TianoCore Security issues 960, 1133, 1134, 1135, 1136, 1309 updates

Product	Component & Version	Changelog
MSP8060	IPMC 1.10.01377b97	Changes since 1.09.0130f42b: Bug fixes: <ul style="list-style-type: none"> • Fixed an issue where it was impossible to set an IPMI password of exactly 16 characters • Fix for health status sensor providing incorrect health status assertion. • Fixed an lanplus compiling issues with Ubuntu 18.08 • Fixed an issue where the wrong sensor description was used in SEL when targeting processing nodes • Internal improvements: • Added node information to the serial console prompt. • Enabled the <i>debuglog</i> bundle feature for Symkloud products.
	BIOS 1.11.09367549	Changes since 1.09.09289d49 <ul style="list-style-type: none"> • New microcode version • New SPS firmware • Reviewed and updated Security patch for NVME SMM Buffer Integrity • Reviewed and integrated TianoCore Security issues 960, 1133, 1134, 1135, 1136, 1309 updates • Reviewed and updated GoldenDoodle & Zombie Poodle variants (CVE-2018-0732, CVE-2018-0733, CVE-2018-0734, CVE-2018-0735, CVE-2018-0737, CVE-2018-0739, CVE-2018-5407) • Reviewed and integrated Intel SA-00233 (CVE-2018-12126, CVE-2018-12127, CVE-2018-12130, CVE-2019-11091)

5/ Associated Network OS

5.1. : Release History

Firmware Package Version	Release Date	Chassis Support	MSH890 0	MSH8910	MSH8920
3.12.00	Sept-2019	MS29xx MS1300	2.23	HOTFIX4.51	1.7.2-12
3.11.00	Feb-2019	MS29xx MS1300	2.22	GA4.50	1.7.2-12
3.10.00	Feb-2019	MS29xx MS1300	2.22	GA4.50	1.7.2-12
3.09.01	Jan-2019	MS29xx	1.14	GA4.50	1.6.4-24
3.08.00	Oct-2018	MS29xx	1.14	GA4.50	1.6.4-24
3.07.00	Apr-2018	MS29xx	1.14	GA4.50	1.6.4-24
3.06.02	Feb-2018	MS29xx	1.14	GA4.50	1.6.4-24
3.05.01	Dec-2017	MS29xx	1.12	HOTFIX4.00	1.5.4-32
3.04.05	Apr-2017	MS29xx	1.12	HOTFIX4.00	N/A
3.00	May-2016	MS29xx	1.12	HOTFIX3.02	N/A
2.16	Sept-2015	MS29xx	1.12	GA2.01	N/A

6/ How to identify your product

MSH-Hub Nodes and MSP-Nodes

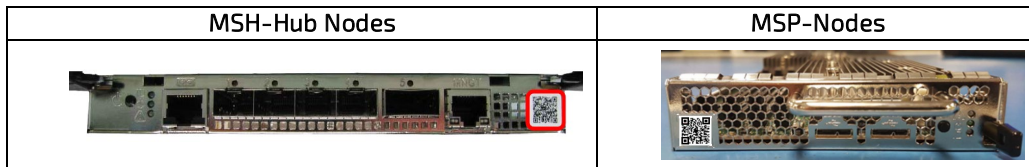
Electronically:

- From the System Monitor WebUI/API (including SystemInformation.txt)
- From any specific component's ipmitool interface (IoL, serial, etc.) with the command 'hpm check'

Physical labels:

- Each MSH-Hub Nodes and MSP-Nodes includes a 2D barcode on its faceplate, encoding the following details:

Board serial number 90xxxxxxxx
 Board part number xxxx-xxxx
 Batch ID xxyyzzzzzz
 Base MAC address 00:A0:A5:xx:xx:xx



MS29xx Chassis

Electronically:

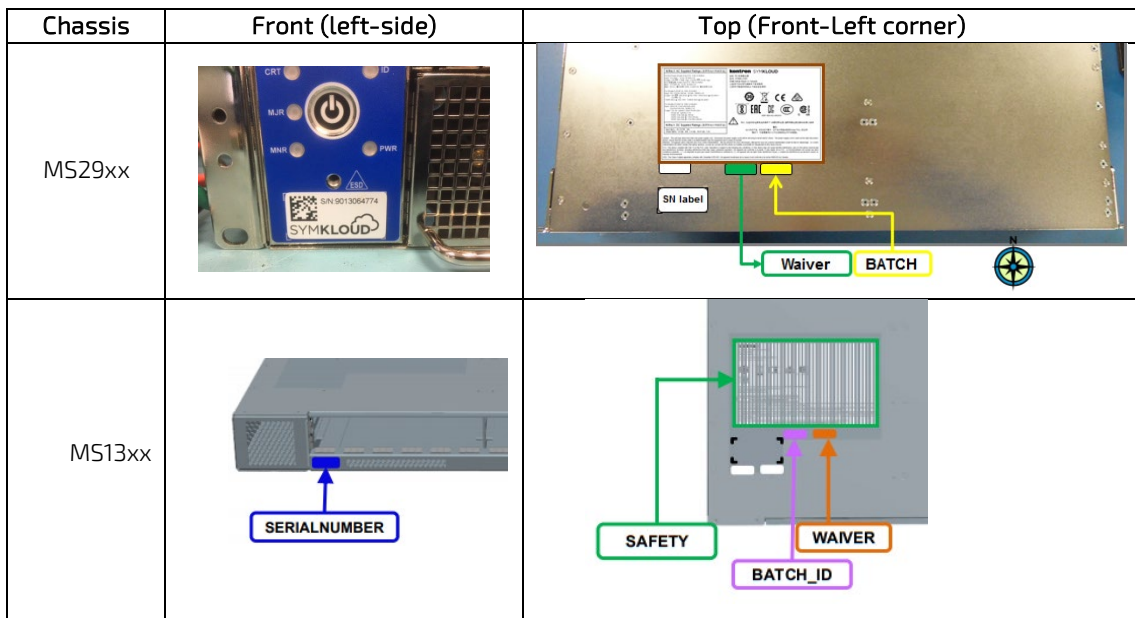
- From the Active ShMC's ipmitool interface (IoL, serial, etc.) with the command 'fru print'; the Chassis SN/PN is listed under FRU Device Description : "PDB 1 (ID 128)" and "PDB 2 (ID 130)"

Physical labels:

- Located on the top-cover of the system, the serial number and Batch ID labels encode:

Board serial number 90xxxxxxxx
 Board part number xxxx-xxxx
 Batch ID xxyyzzzzzz

The System serial number is also encoded on the front-faceplate 'Symkloud' Label (shown below).



About Kontron in Communications

Kontron designs hardware for the software-defined world. Service providers and enterprise clients around the globe collaborate with Kontron and its ISV and channel partners to deploy new services with greater speed, confidence and operational efficiency. Our portfolio is a best-of-breed of OEM hardware and SYMKLOUD Open Infrastructure Platforms dedicated to the deployment of virtual services using software defined networks (SDN) and network functions virtualization (NFV). For more information, please visit www.symkloud.com or www.kontron.com/communications.

CORPORATE OFFICES

KONTRON CANADA

4555 Ambroise-Lafortune
Boisbriand, QC
Canada J7H 0A4
Tel.: +1 450 437-5682
Tel.: +1 800 387-4223